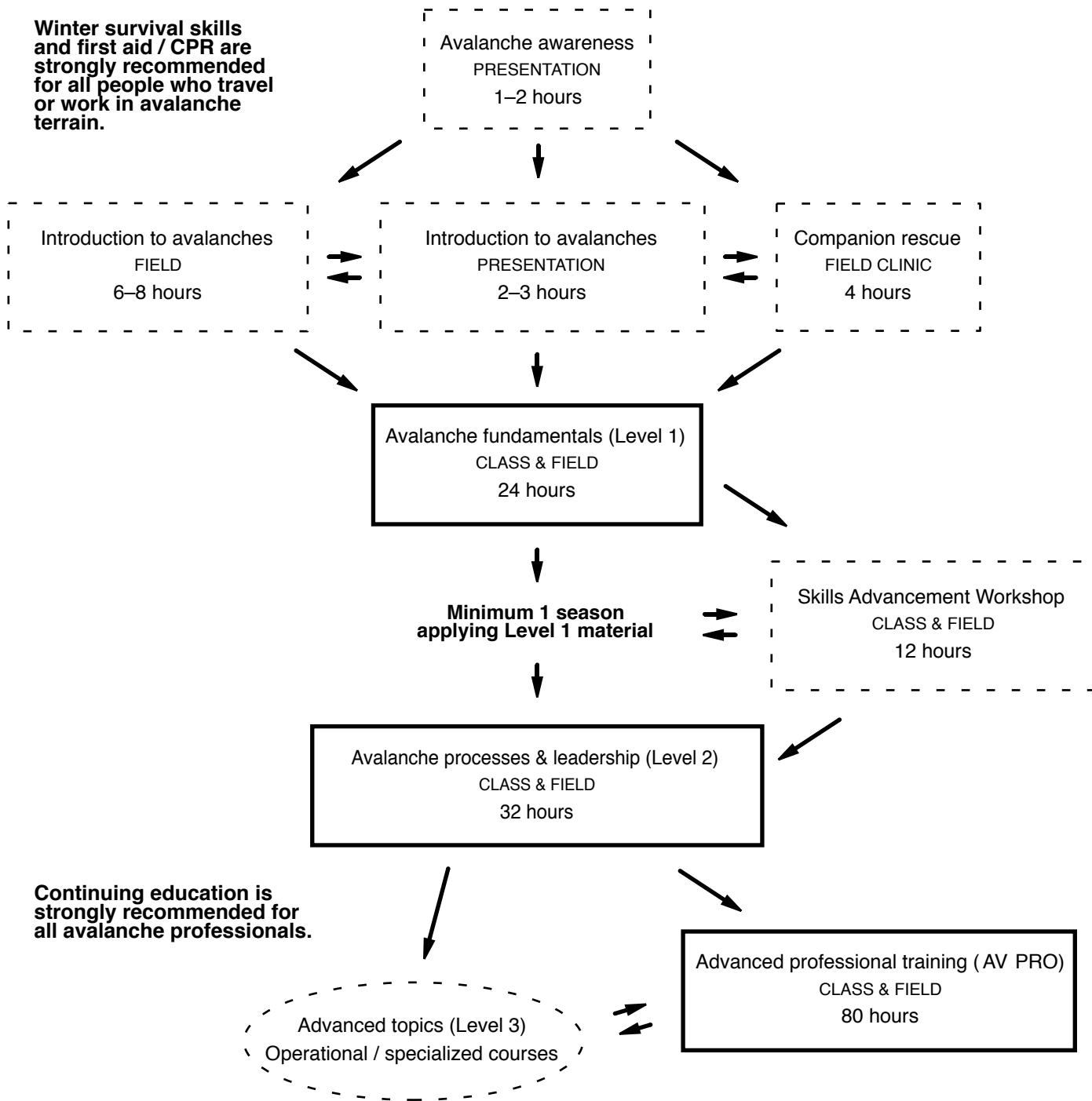
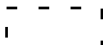


Winter survival skills and first aid / CPR are strongly recommended for all people who travel or work in avalanche terrain.

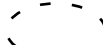


Continuing education is strongly recommended for all avalanche professionals.

KEY:

 Supplemental training. See general guidelines.

 See recommended guidelines.

 See course provider for content.

For more information, see the summary table "Recommendations for U.S. Avalanche Education" available at:

[AAA Education Guidelines](#)

American Avalanche Association U.S Avalanche Education Progression

